

Aspects of Hidden Tewkesbury

Revealed by John Dixon



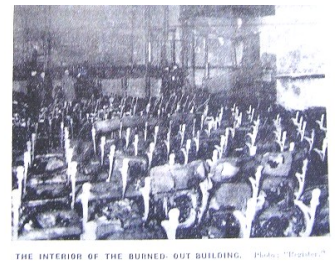
1847



1908



1916



1931

But what is this same building in 2024? In October, *Native Hannah & Newcomer Lucie* helped lead this walk. Tonight I hope the group will rejoin us, and Museum Enthusiasts, to see the mysterious photographs of **Hidden Old Tewkesbury**.



A Tewkesbury Museum Talk

Tues 20 February 2024 7 PM Start (doors 6.45)

**Tewkesbury Baptist Church
Station Rd, GL20 5DR**

Admission includes tea, coffee, cake

